

**S.B.H.S. MEMBERSHIP  
APPLICATION & RENEWAL**

\_\_\_New \_\_\_Renewal

Name \_\_\_\_\_

Address \_\_\_\_\_

City \_\_\_\_\_ State \_\_\_\_\_

Zip \_\_\_\_\_ Telephone \_\_\_\_\_

Email \_\_\_\_\_

**(Please include your email address.)**

This is a gift membership from :

\_\_\_\_\_

**Membership Levels:**

Individual	\$20.00
Family/Library	25.00
Senior (age 65)	10.00
Student	10.00
Business	50.00
Lifetime	250.00
Donation	_____

Please make checks payable to South Brevard Historical Society and mail to P.O. Box 1064, Melbourne, FL 32902-1064.

The South Brevard Historical Society, Inc., is a non-profit corporation and an IRS 501 (C) 3 organization. All contributions are tax-deductible by limits of law. A copy of the official registration and financial information may be obtained from the Florida Division of Consumer Services by calling 1-800-HELP FLA.

SOUTH BREVARD HISTORICAL SOCIETY  
P. O. Box 1064  
Melbourne, FL 32902-1064



*South Brevard Historical Society, Inc.*

*Founded 1966*

P.O. Box 1064, Melbourne, Florida, 32902-1064

www.southbrevardhistory.org

March 2010

**PLEASE JOIN US IN CELEBRATING FLORIDA ARCHAEOLOGY MONTH  
Saturday, March 13, 2010**

**3:00 P M  
Melbourne Public Library  
540 E. Fee Avenue, Melbourne**



**Life Before Home Depot**

**A Presentation by Gregg Harding  
of the Florida Public Archaeology Network**

If something breaks in your home or repairs need to be made, where would you go for supplies? You'd probably visit a store similar to Home Depot. Mr. Harding asks and answers the question, "Where would you go 2,000 years ago?"

Native Americans that lived here during that time were extremely resourceful and made the various habitats of Florida into their own hardware store. Using any materials that would suffice they built homes, crafted tools, and tailored clothes literally putting to practice the phrase "waste not, want not."

Greg Harding is currently employed with the Florida Public Archaeology Network's East Central Region where he presents and performs public outreach and archaeological lectures. He has traveled to Haiti, Mexico, and Ireland on several occasions working with and helping people in areas of health and education while performing personal anthropological research.

**ARCHAEOLOGICAL TREASURE IN BREVARD**

**DID YOU KNOW** that Windover Pond, site of one of the world's greatest archaeological finds, is in Brevard County, Florida, near Titusville. Its yield is causing archaeologists to revise some of the long-accepted theories of early man in North America.

Discovered in 1984, the shallow bog pond was the burial ground for more than 200 Native Americans who lived in the area about 7,000 years ago, more than 2,000 years before the first pyramids were built in Egypt. The ancient pond's muck long ago turned to peat, preserving the bones, and to the archaeologists amazement, the brains of these ancient people. Dr. Rachel Wenz, now director of the East Central FPAN, was assistant to Florida State University archaeologist Dr. Glen Doran who directed the excavation project.

The Brevard Museum of History and Natural Science has been designated as the official exhibitor of the Windover story. A simulated dig site has been constructed here that enables the visitor to become a part of this important discovery. The Museum is located at 2201 Michigan Avenue in Cocoa . For information: phone 321-632-1830 or go to [bmhs@brevardmuseum.org](mailto:bmhs@brevardmuseum.org).

**Dear Members and Friends...**

MARCH IS OFFICIALLY FLORIDA ARCHAEOLOGY MONTH so we're celebrating with the first of our two part series presented by Gregg Harding of "FPAN". We're fortunate to have the East Central Headquarters of the Florida Public Archaeology Network conveniently located so close in Cocoa. They're tucked away in the facilities of the Florida Historical Society, another organization we're please to have among us.

Most of us realize that looking beyond the glitz and lure of our leisure and tourist industries, Florida has a rich and diverse history and prehistory that deserves to be recognized and celebrated throughout Florida in March of each year.

If you would like to do a bit of preparation for our March meeting or just check out an interesting website, visit the Florida Division of Historical Resources. You'll find historical/archaeological information plus a listing of some of the many events going on around the state.

You can start with either of these:  
<http://www.flheritage.com/archaeology/month>  
<http://www.flheritage.com/facts/reports>

ENJOY!

Carol Andren  
President, SBHS

**SBHS CALENDAR .....**

April 10th

We continue to explore the ingenuity of Native Americans in making tools and weapons with Gregg Harding of FPAN.

May 8th

Learn and share Brevard history with a panel of "Old Timers" moderated by Diane Barile.

June 12th

In 1955 the little town of Melbourne and the nation were stunned by the brutal murder of Patricia Van Eeghen and her daughter Phylis. Philip Van Eeghen was soon charged and later he would be the suspect in the "accident" of his son, Rodger, one year earlier.

Learn the details of this sensational murder and all the twists and turns that followed.

\*\*\*\*\*

**Around South Brevard**

Melbourne Beach

**OLD TOWN HALL HISTORY CENTER**

The Old Town Hall History Center in Melbourne Beach will feature a new exhibit for March/April. The display showcases the designs of Founders Day T- Shirts since the 1983 Centennial Celebration through 2009. This is a unique, one-of-a-kind exhibit. The History Center is open on Saturdays from 11:00 to 3:00. For more information call 676-0660.

REMINDER: May 1st Founders Day in Melbourne Beach

Historic Rossetter House Museum & Gardens

Ghost Tour: Friday, March 5, 5:30pm

7:00pm \$7.50/person Call ahead to reserve: 245-9855.

Murder Mystery Tour: Sunday, March 21

Every half hour from 1-4pm

\*\*\*\*\*

**Friends of the Florida Historical Society**

FLORIDA MARINE ARCHAEOLOGY: A Presentation by Dr. Judith Bense, President of the University of West Florida.

Saturday, March 20th 2PM

435 Brevard Avenue, Cocoa

Dr. Bense's dedication to public archaeology has led to the discovery and preservation of numerous significant historical sites in Northwest Florida, including the finding of the lost ships of the 1559 Luna expedition, sent to establish the first Spanish settlement in America in Pensacola in 1559.

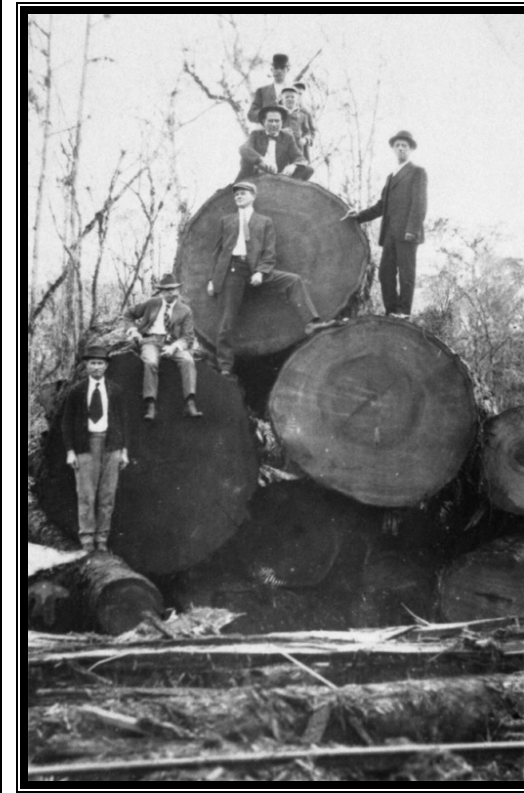
The SBHS thanks **AAA Malabar Mini-Storage**, located across the street from the Malabar Town Hall, for their generous donation of air-conditioned secure storage for the Society's collections and archives.

**THROUGH MARCH**

**VISIT ED VOSATKA'S EXHIBIT:** Melbourne's Industrial Revolution - The Union Cypress Company  
Melbourne Public Library

540 E. Fee Avenue

Ed is a past president of the SBHS and currently serves on the board as Collection Chairman.



Melbourne's Industrial Revolution is the subject of this educational exhibit at the Melbourne Library. Through models, maps, vintage photographs, and artifacts, historian Ed Vosatka shows the era of sawmills, iron horses and steam logging which transformed Melbourne from a quiet, rural village on Carne Creek into an industrial city.

The Union Cypress Company built a large cypress/pine sawmill and the company-owned town of Hopkins on the south side of Crane Creek in 1912. This became Melbourne's first big industry, bringing employment, growth, development and the first electric power.

Their railway to Deer Park in Osceola County not only served the mill, but opened up the vast prairie lands along the St. Johns for settlement and carried much of the regional commerce. It was the first direct route across the St. Johns River marshes in the 80 miles south of Enterprise on Lake Monroe, preceding the Kissimmee Highway (U.S. 192) by 6 years.

**Kellersberger Fund Publications**

The following books published by *the SBHS Kellersberger Fund* are available for sale by the SBHS: ***Tales of Old Brevard***, by Georgiana Kjerulff; ***Rooted in Florida Soil***, by Julia Lake Kellersberger; ***Historic Florida: A Closer Look at the Photographs of a Century Ago in Three Dimension***, by Clement Slade; ***Troubled Paradise: Melbourne Village, Florida***, by Georgiana Kjerulff; and ***Pineapples are Never Black or White***, by Harry Goode, Sr.

SBHS board member, Patsy Oliphant, is in charge of sales of the Kellersberger books. Publications will be on sale at most general meetings.

The SBHS thanks *Andren Software Company* for donating our website.